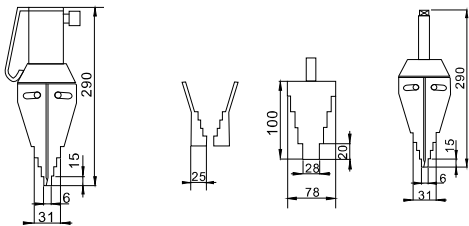


## ➤ Flange Spreader

- Max Working Pressure: 700 Bar;
- For maintenance, commissioning, shutdowns, testing and valve change outs;
- No need for hammers, chisels, slings or chain blocks;
- Requires very small access gap of only 6 mm;
- Both mechanical and hydraulic options available.



Art.No	Max. Separation Force (ton)	Top End Thickness (mm)	Max. Separation Distance (mm)	Type	Oil Volume ( cm <sup>3</sup> )	Weight ( kg )
ZV FSM-8	8	6	81	Mechanical	–	6.5
ZV FSH-14	14	6	81	Hydraulic	78	7.0

## ➤ Integral Hydraulic Flange Spreader

- Built inside, no extra pump and hose;
- Operation simple and efficient.



Art.No	Max. Separation Force (ton)	Top End Thickness (mm)	Max. Separation Distance (mm)	Type	Oil Volume ( cm <sup>3</sup> )	Weight ( kg )
ZV 14.5-TI	14	6	81	Hydraulic	78	11

## ➤ Hydraulic Lifting Device

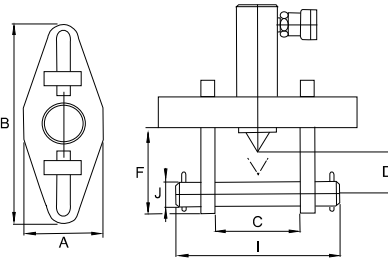
- Max Working Pressure: 700 Bar;
- Min installation space 10mm;
- Capacity is 16 ton @ 700 Bar;
- Every step can bear full load;
- Vertical lifting;
- Unique chain lock wedge shape design;
- Single acting, spring return;
- Including safety block SB-2.



Art.No	Max Lifting Capacity (ton)	Min Width (mm)	Stroke (mm)	Max. Separate Distance (mm)	Oil Capacity (cm <sup>3</sup> )	Weight (kg)
ZV LW-16	16	10	21	81	78	9

## ➤ Hydraulic Flange Spreader

- Compact and ergonomic design, easy to use;
- Adjustable jaw widths from 70mm to 216mm for a wide range of applications;
- Single-acting, spring return cylinders for fast, trouble-free operation.



Art.No	Stud size (mm)	Capacity (ton)	Oil Capacity (cm <sup>3</sup> )	Stroke (mm)	Standard wedge (mm)	Outside Size (mm)								Weight (kg)
						A	B	C		D	F	I	J	
								Min.	Max.					
ZV FS-56	19-28	5	24.6	38	3-28	76	209	70	155	32	88	206	19	11.5
ZV FS-109	31-41	10	78.7	54	3-28	108	108	104	216	50	114	273	31	18.0

## ➤ Flange Alignment Tool

- It rectifies twist and rotational misalignment quickly, safely and without the need for an external power source
- Appropriate for use on most ANSI, API, BS and DIN flanges
- Reduces set-up time: no need for chains, pulleys or rigs
- Safety strap helps provide secure operation
- Can be installed and used in any position
- Portable, lightweight design enables easy transport and use, even in remote locations

Art.No	Capacity (ton)	Socket Range (mm)	Flange Thickness (mm)	Weight (kg)
ZV ATM-1	0.3	17-27.2	17-50	2.0
ZV ATM-3	3.0	25-54	30-115	9.7
ZV ATM-5	5.0	≥ 31.5	80-203	16.2

